



Dear Parent of an Early College Scholar,

We consider our team family, and we invite you to partner with us as we work together toward your child's success. It takes every member of the team doing his/her part to achieve truly great things. Your child's success, both academically and emotionally, is the reason we do what we do.

We know that the early college course of study is rigorous. It is NORMAL for kids to struggle from time to time. But we believe the struggle will sharpen their character and opportunities. We believe every student can be successful with the proper tools. Please join us on the journey and let us know how we can help you help your scholar.

Your MavECHS Team

We are in this together!



Ten Tips for Helping your Early College Scholar Succeed!

1. **Partner with teachers.** Meet them early and communicate regularly. We are all on the same team!
2. **Check grades and attendance often.** Parent Connection is a perfect tool that you can access anytime.
3. **Be the parent.** It's ok to take away the phone, games, or other privileges. 😊 Use the incentives you have to encourage better choices.
4. **Monitor homework.** Set a specific time and place for homework DAILY that is free of distractions and other responsibilities (i.e. babysitting, job, etc.). Choose a place where you can see their progress.

5. **Check organization.** Help students set up and maintain organized binders. We are working on this at school as well, but we need your help at home.
6. **Plan for success.** Each student has a planner. Look at it regularly to see that due dates and scheduled study and/or homework times are being included and implemented.
7. **Ask questions.** Ask about what they are learning, where they are struggling, and how you can help. (They are teenagers and aren't always going to answer. 😊 Keep asking anyway.)
8. **Get involved.** We regularly need chaperones and helpers. Students feel valued when their parents are involved. (Even when they don't show it!)
9. **Plan for the future.** Begin conversations about next steps in college and career. Help them identify their strengths!
10. **Celebrate Success!** EC students are working hard and doing something truly difficult. Celebrate successes, even small ones!

Helpful Tools



Parent Connection

(Grade and Attendance Check)

- Create an account so that you can view attendance and grades.
- Sign up for notifications about grades.
- Add multiple children to your account.
- Visit the website for instructions.

<http://parentaccess.pasadenaisd.org>



Schoology

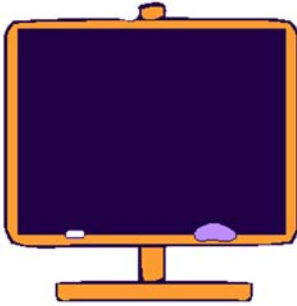
(Assignment and Calendar Check)

- This is an online extension of your scholar's classroom. Teachers use this daily so students can access material anytime from anywhere.
- Ask students to log on to show you assignments in progress, notes, resources, and due dates.
- Create your own account to monitor anytime.

Blackboard

(SJC grade check)

- Ask students to log on to show you assignments, due dates, and grades.



Remind 101

(Assignment reminders)

Text to: 81010

Sign up yourself or check your scholar's phone.

- For ECHS info – text @mavechs
- For PAP English – text @cburge2017
- For PAP Algebra 1 – text @hart-alg1
- For PAP Algebra 2 – text @hart-alg2
- For PAP Biology – text @echsp
- For AP Human Geo. – text @echshg1718
- For World Geography – text @echswg1718
- For TSI lab – text @tsi2017-18
- For AVID – 2/3M – text @avid23mw
- For AVID – 2/3T – text @ggahc2
- For AVID – 4M – text @avid4m
- For AVID – 4T – text @bcec43
- For AVID – 5/6T text @ecavid5



MavTime

(School day intervention)

- Ask students to log in to Sched and show you which sessions they chose for extra help.
- Priority Days – Teachers choose which students must come and notify them through schoology.
- Other helpful sessions include – organization, coping with stress, and other social and emotional health topics.

MavECHS Fall Tutorial Schedule

	AM	PM
Carrie Burge	6:55 – 7:10 Tue, Wed, Thurs, Fri	2:40 – 3:30 Mon, Wed, Fri
Wendy Green	6:30 – 7:10 Mon, Tues, Thurs	2:35 – 3:00 Mon, Wed, Fri
Kayla Hart	6:40 – 7:10 Mon, Thurs	2:35 – 3:30 Mon, Wed
Pamela Maxwell	6:45 – 7:10 Mon	2:45 – 3:45 Wed
Dolores Gonzalez	6:45 – 7:10 Fri	2:35 – 3:05 Mon, Wed, Thurs

- Teachers may be available for other times by appointment.
- Students are always welcome to seek help from other teachers of the same content area on the main campus.
- Every Tuesday at 2:45 is PLC time for MavECHS teachers. No Tutorials are available.
- On Wednesdays a late bus is provided at 4:15 pm for bus riders who want to stay for tutorials.

Our Team

- Dr. Angela Kennedy – Instructional Dean
 - akennedy@pasadenaisd.org
- Mrs. Laura Milam – Counselor
 - lmilam@pasadenaisd.org
- Mrs. Carrie Burge – PAP English 1
 - cburge@pasadenaisd.org
- Mrs. Kayla Hart – PAP Algebra 1 & 2
 - khart@pasadenaisd.org
- Ms. Wendy Green – PAP Biology
 - wgreen@pasadenaisd.org
- Ms. Pam Maxwell – AP Human Geography & World Geography
 - pmaxwell@pasadenaisd.org
- Ms. Dolores Gonzalez – AVID & Spanish 1
 - dgonzalez@pasadenaisd.org

Follow us on Facebook: @MavECHS

